

# TRIPLE SPLIT SUPPORT

THE TRIPLE SPLIT SUPPORT is designed for installation of three panel antennas up to 2,6 m (8,5 ft).

### FLEXIBILITY

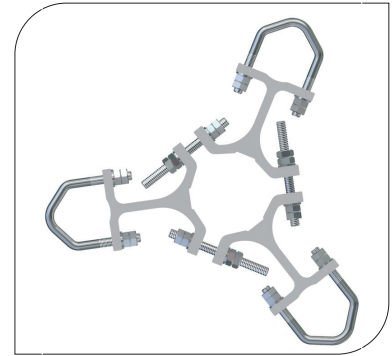
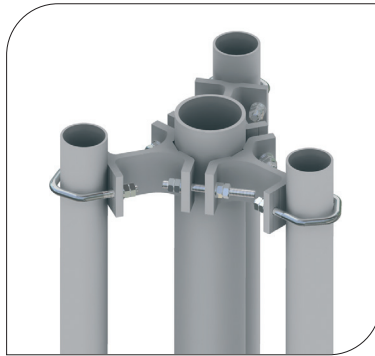
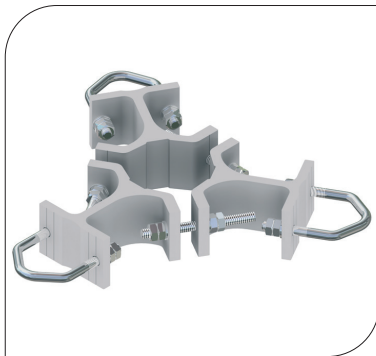
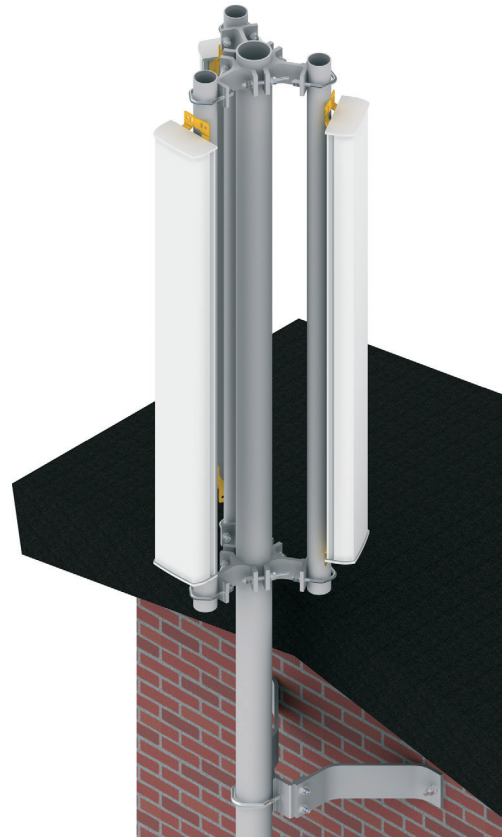
The support is mounted to a centre tube with dimension Ø75 to 100 mm, (3,0 to 4,0 in) or Ø100 to 120 mm, (4,0 to 4,7 in) The antenna mounting tube can be Ø45-60 mm, (1,8 to 2,4 in).

### QUALITY

All components are made of anodized aluminium and stainless steel which gives the support excellent corrosion resistance.

### EASY ASSEMBLY

The choice of materials makes the product very light which makes the handling and installation very easy.



## ORDER AND TECHNICAL INFORMATION

DRAWING NO:	CD 189060		CD 189160	
MOUNTING SPAN:	<b>MOUNTING TUBE:</b> Ø45-60 mm (1,8 to 2,4 in)	<b>CENTRE TUBES:</b> Ø75-100 mm (3,0 to 4,0 in)	<b>MOUNTING TUBE:</b> Ø45-60 mm (1,8 to 2,4 in)	<b>CENTRE TUBES:</b> Ø100-120 mm (4,0 to 4,7 in)
FUNCTION DESCRIPTION:	Antenna support kit in two levels with space for 3 mounting tubes on 1 centre tube. Typical for installation of panel antennas.			
PACKAGE DIMENSIONS:	<b>LENGTH:</b> 285 mm (11,2 in) 285 mm (11,2 in)	<b>WIDTH:</b> 190 mm (7,5 in) 190 mm (7,5 in)	<b>HEIGHT:</b> 150 mm (5,9 in) 150 mm (5,9 in)	<b>WEIGHT:</b> 5,1 kg (11,24 lb) 5,2 kg (11,46 lb)

**NOTE!** Mounting tubes are not included. Must be ordered separately

Quality Design